

# Memorials

Memories that last a lifetime

Grantham Crematorium

01476 563083 | [grantham.memorialoffice@thecmg.co.uk](mailto:grantham.memorialoffice@thecmg.co.uk)





## Welcome to Grantham Crematorium

At Grantham Crematorium we offer a peaceful setting for honouring and remembering your loved ones. Set in beautifully landscaped grounds, our crematorium offers a calm environment with trees, flowers and wildlife, perfect for quiet reflection.

With the option to create bespoke Memorial gardens, our grounds uniquely celebrate those laid to rest, ensuring their space is a true reflection of their memory.

Our compassionate team is dedicated to supporting you through every step, ensuring a meaningful and personalised farewell for your loved one. We hope you find comfort in the tranquil beauty and serene atmosphere of Grantham Crematorium.

### At Grantham Crematorium we are proud of:

- Being experts in caring for ashes
- Helping to create everlasting memories with Memorials
- Providing a peaceful sanctuary for everyone

We're here to **support you** and **provide guidance** every step of the way.

# Memorials



We are pleased to offer a range of Memorial options to honour your loved ones in a meaningful way. Our beautifully maintained grounds provide a serene setting for various Memorial choices. Our private Memorial gardens and communal gardens offer secluded and personalised spaces for reflection, along with the option to explore our peaceful and precious site.

We provide personalised plaques and markers, which can be placed in our gardens, along pathways, or near special features.

We also have our Book of Remembrance which offers a timeless way to honour your loved one with elegantly handwritten inscriptions by skilled calligraphers.

In addition to these options, we offer bench gardens and a selection of other stone Memorial options. Visit us to explore all options and find the perfect way to celebrate and remember your loved one.

### Memorials

*Memories that last a lifetime*



# What happens after the cremation?

Following the cremation of a loved one, there are several options for the care and memorialisation of their ashes.

We understand and appreciate that deciding on the final resting place can take time and that's why we offer flexible and supportive solutions to meet your needs.

We can securely store the ashes for as long as you need, at no cost, giving you the space and time to make a thoughtful decision. During this time we are available to help and discuss the various Memorial options including:

- **Scattering ashes** in our gardens
- **Burying ashes** in a Memorial garden of your choice
- **Placing the ashes** in an above ground Memorial option

You also have the option to split the ashes should you wish to have a Memorial within our grounds but also have a home-based Memorial where you can keep ashes. This also gives you the option to place ashes into jewellery or other keepsakes in the future, should you wish.



Whatever your decision we are here to support you throughout the process, ensuring that your loved one's memory is honoured in a way that feels right for you and your family.



## Placing the ashes

Whatever your final decision, we will always make sure that you can be present when your loved one's ashes are laid to rest in our gardens of remembrance, should you wish to be.

## Personalisation

Most Memorials offer personalisation whether they are crematoria based or kept at home – let us know if you have any specific personalisation requirements.

The following pages offer an insight into the specific Memorial options available; from crematorium Memorials to personal Memorials that you can cherish at home, we offer a wide variety.

If you are interested in a Memorial which isn't included or is bespoke, please let us know and we will do our best to help create your vision.

We're here to **support you** and **provide guidance** every step of the way.

**Memorials**  
*Memories that last a lifetime*



# Crematorium





# Memorial Gardens

Our private and communal gardens offer unique spaces for families and friends to honour and remember loved ones. These beautifully landscaped areas provide a calming retreat, surrounded by nature's beauty, where you can find solace and comfort.

We have several garden locations in open and secluded spaces, with the option to make them unique by adding special and personalised Memorials.

All gardens are perfect for reflection, private Memorial services, spending time in contemplation or simply having a peaceful sit down. The well-kept grounds invite calming walks and moments of quiet remembrance.



Private Gardens



Communal Gardens

## FOR MORE INFORMATION OR TO ORDER YOUR MEMORIAL

Speak to us at the crematorium, contact us on **01476 563083**  
or email us:  
[grantham.memorialoffice@thecmg.co.uk](mailto:grantham.memorialoffice@thecmg.co.uk)

## Types of Memorial Gardens

Our **Private Gardens** are available in either the shape of a square, circle, rectangle or oval with an ornamental tree or rose and stones. Each type/size of garden is for a specific number of interments (burial of ashes).

A **Bench Garden** featuring the elements of a Private Garden, plus a 3-seater bench, located in our grounds.  
*(This will accommodate two interments).*

A **Ribbon Garden** with an ornamental tree or rose.  
*(This will accommodate two interments).*

A **Communal Rose Garden** featuring a beautiful rose tree, available in a variety of colours.  
*(This will accommodate two interments).*

We have a wide choice of locations for positioning Memorial Gardens and we also offer bespoke designs to suit your wishes.



# Memorial Gardens



Private Garden

Private Gardens offer a space that can be as personal and unique as you wish, honouring the memory of loved ones. The surrounding grounds are meticulously cared for daily, ensuring a peaceful and comforting visit.

*(This garden is 60" accommodating six interments)*



Communal Rose Garden

Communal Gardens provide a shared space for honouring the memory of loved ones in a serene and beautiful setting. The gardens are thoughtfully maintained, offering a peaceful environment for all visitors to reflect and find comfort amidst nature.



Ribbon Gardens



Bench Garden



View of Garden

At **Grantham Crematorium**, our Memorial Gardens are more than just a place of rest — they are a sanctuary where families can celebrate and honour the lives of their loved ones in a meaningful and personal way.

We're here to **support you** and **provide guidance** every step of the way.

**Memorials**  
*Memories that last a lifetime*



# On-site Memorials

We offer a wide and varied selection of on-site Memorial options, ensuring that every family can find a fitting tribute for their loved one. From traditional plaques to unique, personalised stone Memorials, our range caters to diverse preferences and wishes.



Large Granite Book

Our large granite book provides a natural and peaceful way to honour loved ones. Each personalised plaque is carefully placed, allowing for an enduring tribute that rises gracefully within the landscape. We have granite books placed in various locations within our grounds.



Cenotaph

Our cenotaph serves as a symbolic monument for those who are no longer with us. Families can have their loved one's name and a personal message inscribed, creating a lasting tribute. It stands as a symbol of enduring memory, offering comfort and a place for collective remembrance.



Tower Plaques

Tower plaque memorials provide a natural and peaceful way to honour loved ones. Each personalized plaque is carefully placed on a tall tower, allowing for an enduring tribute that rises gracefully within the landscape.

These memorials create a quiet, serene space for families to gather, reflect, and remember, offering a tranquil place of remembrance while blending beautifully with the natural surroundings.



Wall Tablets

Wall tablets offer a respectful way to commemorate loved ones at the crematorium. Crafted from high-quality materials, they can be customised with personal inscriptions, serving as a lasting memorial. Carefully positioned, they can be admired while walking the grounds.





Plaques

**Plaques** provide a personal way to highlight the memory of a loved one, including their name, a message or any details of your choice. These can be placed in various locations on our grounds.



Boulder Memorials

**Boulder Memorials** offer a natural and enduring tribute to loved ones. These carefully selected stones can be personalised with inscriptions, blending seamlessly into the landscape.



Kerb Plaques



Double Heart Memorial

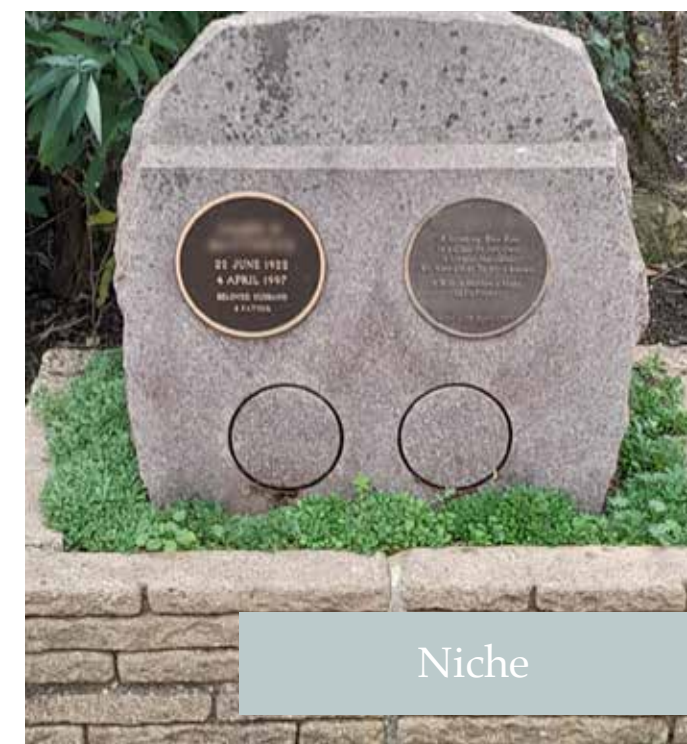


Granite Book



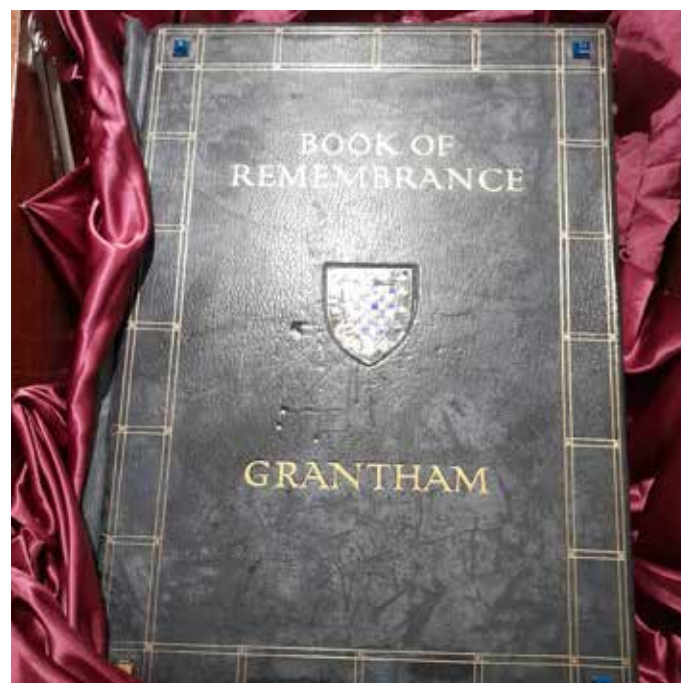
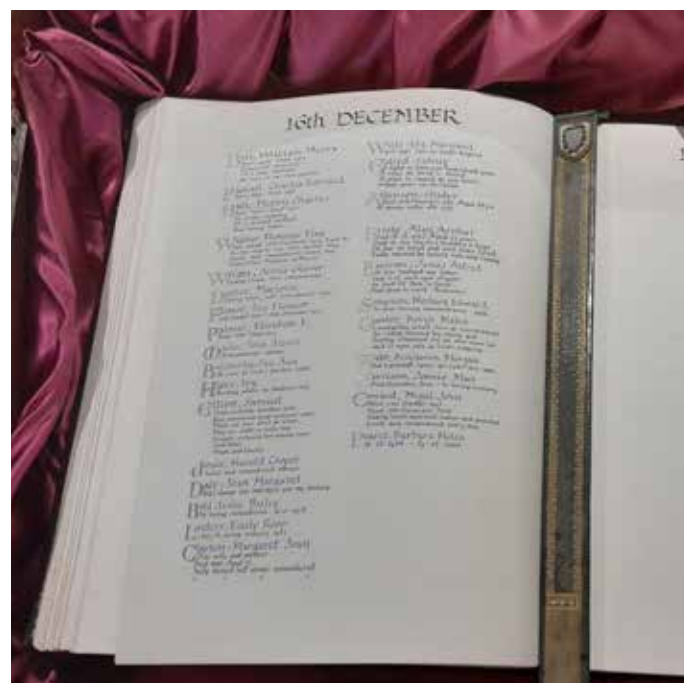
Centerpiece Granite Memorials

These personalised Memorials tablets surround our floral centrepiece, offering a scenic and peaceful space to remember and reflect. The Memorial allows for a personal inscription to be included in a gold colour.



Niche

Our niches provide a dignified and secure option for the permanent storage of ashes, ensuring a meaningful and lasting tribute to loved ones. Each niche includes a tablet for a personalised inscription.



Elegantly displayed, each entry in our **Book of Remembrance** is beautifully inscribed by skilled calligraphers, creating a lasting tribute that families can visit and reflect upon, ensuring that the memory of their loved ones is preserved in writing.

*We're here to **support you** and **provide guidance** every step of the way.*

## FOR MORE INFORMATION OR TO ORDER YOUR MEMORIAL

Speak to us at the crematorium, contact us on **01476 563083** or email us: **grantham.memorialoffice@thecmg.co.uk**

## Memorials

*Memories that last a lifetime*



# Keepsake





# Keepsake Memorials

Alongside our crematorium Memorials we also offer a variety of keepsake options should you wish to have a special Memorial at home or in your garden.

We have a beautiful array of jewellery, photo frames for ashes, urns for your garden or pond to nurture the environment, plus plenty more offering a diverse variety to suit various Memorial wishes.

## Jewellery

Memorial jewellery serves as a cherished keepsake, allowing you to keep your loved one close, while the item becomes a tangible symbol of their memory.

There are various ways to craft jewellery tributes, as well as a variety of materials and colour choices, along with the option to personalise, making the piece completely unique.



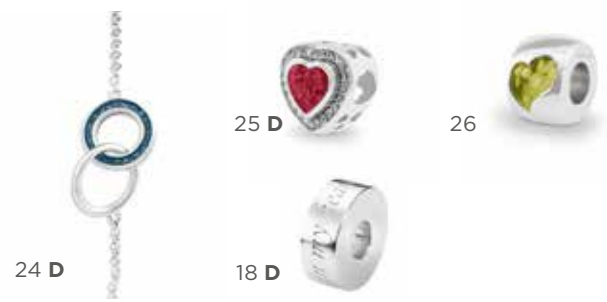
### Memorial Jewellery options include:

- Ashes into resin
- Hair into resin
- Clothes fibres into resin
- Laser etching of handwriting
- Personalised engraving
- Self-fill options

### Necklaces & Pendants



### Bracelets & Charms



Add a sprinkle of diamond dust which presents a subtle glint in sunlight.

- Silver jewellery is usually available within 7-10 days
- Charms are Pandora compatible
- Certain rings can be memorialised with the ashes of two loved ones and allows for two different coloured resins
- Earrings and certain rings cannot be engraved due to their size

### Earrings



### Rings



### Customisation

Customise your piece of jewellery with your preferred material and resin colour to create your perfect Memorial. Plus, add a personal etching or engraving for even more of a personal touch.

All jewellery comes with a 12-month guarantee.

### Resin Colour



### Metal Colour (Sterling Silver or Gold)



We're here to **support you** and **provide guidance** every step of the way.

**Memorials**  
Memories that last a lifetime



# Home and Garden Memorials

## Home Memorials

Home Memorials are special tributes for you to cherish and admire from the comfort of your home. From elegantly crafted urns to wooden hearts with chambers for ashes, a loved one can own a special place in your home.

Available in a range of styles, designs and sizes, home Memorials are suitable to be positioned in a variety of spaces and in a design that meets your wishes.



## Garden Memorials

Garden Memorials create peaceful outdoor spaces to honour those we have lost. These tranquil settings, often enhanced with a plaque, markers and outside urns offer meaningful environments for reflection and remembrance, fostering a connection with nature.



# Urns and Caskets

Whether you need an urn or casket for a burial, scattering or keeping at home, these sacred containers offer a final resting place to honour and preserve the ashes of loved ones.

With a variety of options available, in various materials and styles, there is something to suit all wishes, traditions and locations; from home, to garden and water.



### Caskets

A simple, yet high quality option available in various materials including traditional wood, where you can safely keep the ashes of your loved one.

### Scatter Tubes

For a gentle farewell, our scatter tubes provide a respectful way to scatter ashes with care or keep at home until the time is right.



We're here to **support you** and **provide guidance** every step of the way.

**Memorials**  
Memories that last a lifetime



# Memorials

Thank you for exploring our range of Memorials, which has been formed with loved ones at heart and where memories are everlasting.

We understand the importance of preserving legacies and providing comfort during times of remembrance. Our dedicated team is here to guide you through every step of the memorialisation process, ensuring that each tribute reflects the personality and individuality of your loved one.

Together, we can help you create a lasting Memorial that honours their unique spirit and celebrates their life.



We're here to **support you** and **provide guidance** every step of the way.

# We're Here to Support You

We're committed to assisting you every step of the way and answering any questions or queries you may have. For more information or to speak to our dedicated Memorial Specialist contact us today.

Call us:  
**01476 563083**  
Email us:  
**[grantham.memorialoffice@thecmg.co.uk](mailto:grantham.memorialoffice@thecmg.co.uk)**



**Memorials**  
*Memories that last a lifetime*



**Address:**

Harrowby Road, Grantham,  
Lincolnshire, NG31 9DT

**Crematorium Grounds & Cemetery Opening Hours:**

Mon – Sunday: 24/7

(Excluding bank holidays)

**Office & Book of Remembrance Opening Hours:**

Mon – Fri: 9:00am – 5:00pm

(Excluding bank holidays)

**Telephone:**

01476 563083

**Email:**

[grantham.memorialoffice@thecmg.co.uk](mailto:grantham.memorialoffice@thecmg.co.uk)

**Social Media:**

[Facebook.com/GranthamCrematorium](https://www.facebook.com/GranthamCrematorium)

